



*Serving the Community since 1956*

Published by the Australian Asian Association of WA Inc.



## COVID-19 CORONAVIRUS: WHAT YOU CAN AND CAN'T DO

Information about current restrictions in Western Australia.

### Perth, Peel and the South West

Public health and social measures are in effect for the Perth and Peel (including Rottnest Island) and South West region.

If you have visited an exposure site during the relevant times, you are required to follow the corresponding health advice issued for that location, unless directly advised otherwise by the Department of Health. If you have or develop symptoms, get tested, self-isolate and phone 13 COVID (13 26843).

### Masks

Masks are required in the following settings:

- at all public indoor settings
- in all vehicles unless the person is travelling alone or with members of the same household
- at residential aged or disability care facilities, both indoors and outdoors
- at a hospital.

Anyone who has been in Perth and Peel (including Rottnest Island) regions since Thursday 6 January, 2022 must also follow the mask requirements for two weeks after leaving these regions.

Anyone who has only been in the South West since Wednesday 12 January, 2022 must also follow the mask requirements for two weeks after leaving this region.

It is recommended you wear a mask outdoors where physical distancing is not possible.



- There are exemptions from wearing a face mask, including for medical reasons and primary school aged children or younger.

### Proof of vaccination requirements (Perth and Peel venues only)

- Proof of vaccination requirements will be further expanded on 31 January state-wide.

Proof of vaccination is currently required in Perth and Peel to enter the following venues:

- Nightclubs
- Music events (above 500 people) and specified high risk events
- Pubs, taverns, hotels (hospitality):  
With a capacity of greater than 500 patrons; or  
With a licence that allows them to operate after midnight
- A place operating under a special facility license:  
With a capacity of greater than 500 patrons; or  
With a licence that allows them to operate after midnight
- A place operating under an occasional liquor licence (licensed for 250 or more patrons)
- The gaming floor of the Perth Crown Casino.

People will be required to show proof of their COVID-19 vaccination, either in a digital or paper-based form, along with approved identification. See the Proof of COVID-19 vaccinations page for more information.

Both venues and patrons will have a shared responsibility when it comes to proof of vaccination, with venues required to ensure that each patron must produce evidence of their vaccination status and take reasonable steps to ensure patrons do not enter the premises without producing evidence of their vaccination status.

### Get tested for COVID-19

If you have visited an exposure site during the relevant

Continued on page 2 ▼



# PRESIDENT'S REPORT



Dear members

The Annual General Meeting was held in October 2021 and due to the tenure of some committee members and officers expiring, nominations were called for and a new committee was declared elected by the returning officer.

It is with great pleasure and humility that I will serve you our fantastic members as the President. COVID has greatly changed the way our society functions and this is particularly obvious at the Association Offices with a large movement of people moving through our building for use of the hall, Emergency Relief and the Centre based Aged Care Programs. To this effect I attended a meeting called by the Dept Of Health WA. Present were the Head Medical Doctor Andy Roberts and Ben Harvey Head of the WA Safe App. They were seeking CALD Community response to COVID, in particular use of the App, Vaccination Rates and how better can CALD Community groups be messaged. There were several suggestions some of which included Health Dept employees having seminar sessions with communities, community leaders having an input into press

releases by the Premier and funding for those who were quarantined and could not attend work. Also discussed were implications when the borders reopened.

Thanks to Marlene, Saro, Sophie and volunteers our service base in the Associations Gosnells office continues to expand, with vital services like vehicular driving and swimming being imparted to the rapidly expanding CALD communities in the South Eastern Corridor, comprising Gosnells and surrounds. We had a small set back when the roof of a section of the building was blown off in a storm.

I wish to thank in a particular manner Mr. Romello Anandappa, the General Manager, the Coordinators Dushyanthi Fernando and Brian D'Monte and the rest of the staff for the excellent work they do in running the HCP, CHSP and Disability services programs.

The strength of the association is measured by its members, and you are the best. I promise to serve you in a resolute and humble manner in the years ahead.

**Mel Fialho**  
President

## ACTIVITIES FOR CALD WOMEN ORGANISED FROM OUR AAA OFFICE AT THE GOSNELLS AGONIS CENTRE.



## COVID-19 CORONAVIRUS: WHAT YOU CAN AND CAN'T DO

times, you are required to follow the corresponding health advice issued for that location, unless directly advised otherwise by the Department of Health. You are also required to notify WA Police by phoning 13 COVID (13 26843).

### SafeWA and contact registers

You can help keep WA safe by checking in at businesses and venues using SafeWA, or by leaving your details on a contact register.

Most businesses and venues are required to maintain a contact register. The WA Government's SafeWA app is an easy way for people to check-in at businesses. A manual contact register must also be available.

Contact registers are essential in assisting contact tracers to identify people who may have been exposed to a positive case.

### Hospitals, aged and disability care

To help protect people in hospitals, aged and disability care, family members can visit residents, but some additional restrictions are in place.

Staff and visitors must wear masks indoors and outdoors. You should not visit if you have:

- returned from overseas in the last 14 days
- been informed you are a close contact of a confirmed case of COVID-19 in the last 14 days
- not had an up-to-date influenza vaccination
- symptoms, including: fever, recent history of fever symptoms of acute respiratory infection (e.g. shortness of breath, cough, sore throat, loss of smell or taste

Additionally, quarantine centre workers must wear a face mask and keep 1.5 metres away from other people when visiting residential aged care facilities.

### Controlled border

The controlled border arrangement provides a system for safe travel into WA from interstate, depending on where travellers have come from and who they've had contact with in the 14 days prior to travel. They are also subject to conditions, including completing a G2G Pass (external link) declaration prior to entry.

For more information, visit the Controlled border page - <https://www.wa.gov.au/government/covid-19-coronavirus/covid-19-coronavirus-controlled-border>



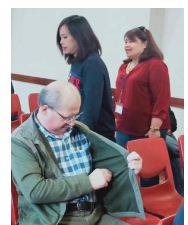
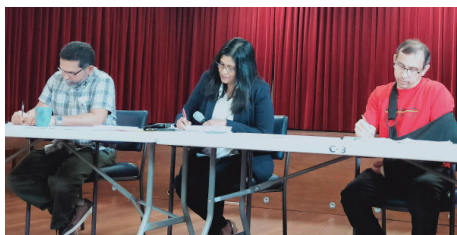
Triple A Care recognises and supports people with disabilities. We offer the same opportunities to those with and without disabilities. We use a person centred approach to Plan and deliver quality services. Our Day Centre is on the ground floor and easily accessible for people with disabilities. Our clients and their carers are given the opportunity to provide feedback regarding our services

Information regarding our services is available on [www.aaawa.org.au](http://www.aaawa.org.au)

Triple A Care recognises the importance of carers and their role and uphold the Charter of Rights and Responsibilities.

1. Carers must be treated with respect and dignity.
2. The role of carers must be recognised by including carers in the assessment, planning, delivery and review of services that impact on them and the role of carers.
3. The views and needs of carers must be taken into account along with the views, needs and best interests of people receiving care when decisions are made that impact on carers and the role of carers.
4. Complaints made by carers in relation to services that impact on them and the role of carers must be given due attention and consideration.

## TRIPLE A CARE STAFF MEETING / TRAINING SESSION





# TRIPLE A CARE STAFF CHRISTMAS LUNCHEON



# TRIPLE A CARE CLIENTS CHRISTMAS LUNCHEON





# TRIPLE A CARE CLIENTS CHRISTMAS LUNCHEON



## TRIPLE A CARE ACTIVITIES IN PHOTOS 2021

SOCIAL SUPPORT GROUP/CENTRE BASE DAY CARE/ NDIS ACCESS TO THE COMMUNITY

### TUESDAY GROUP ACTIVITIES



### WEDNESDAY GROUP ACTIVITIES



### THURSDAY TEMPLE GROUP ACTIVITIES



### NDIS ACTIVITIES



# Charter of Aged Care Rights

Triple A Care upholds the Charter of Aged Care Rights to our Consumers who have the right to:



Australian Government  
Department of Health



Australian Government  
Aged Care Quality and Safety Commission

1. safe and high quality care and services;
2. be treated with dignity and respect;
3. have their identity, culture and diversity valued and supported;
4. live without abuse and neglect;
5. be informed about their care and services in a way they understand;
6. access all information about them, including information about their rights, care and services;
7. have control over and make choices about their care, and personal and social life, including where the choices involve personal risk;
8. have control over, and make decisions about, the personal aspects of their daily life, financial affairs and possessions;
9. their independence;
10. be listened to and understood;
11. have a person of their choice, including an aged care advocate, support them or speak on their behalf;
12. complain free from reprisal, and to have their complaints dealt with fairly and promptly;
13. personal privacy and to have their personal information protected;
14. exercise their rights without it adversely affecting the way they are treated.

## SERVICES AVAILABLE FOR THE COMMUNITY

### TRIPLE A CARE:

HOME AND CARE PACKAGES (HCP) - (08) 9328 3435

COMMONWEALTH HOME SUPPORT PROGRAMME (CHSP) - (08) 9328 7688

DISABILITY SUPPORT SERVICES - (08) 9328 7688

### EMERGENCY RELIEF:

Perth - (08) 9328 6202 Gosnells - (08) 9300 9156



Triple A Care  
The Australian Asian Association of WA Inc

### VISION

To provide a high standard of care and service in the community enabling our consumers to reach their full potential.

### MISSION

To help our consumers and their carers to journey through life with respect and dignity and achieve their goals.

### VALUES

#### Compassion:

We treat all with kindness, empathy and dignity.

#### Integrity:

We operate ethically, in an honest, reliable and fair manner.

#### Inclusiveness:

We value diversity and are devoted to equality for all.

#### Respect:

We believe in each other and accept differences without judgement.

#### Dignity:

We believe that everyone is worthy of honour and respect.

## NDIS CODE OF CONDUCT



### Respect the rights of the person

Act with respect for individual rights to freedom of expression, self-determination and decision-making in accordance with relevant laws and conventions



### Respect privacy

Respect the privacy of people with disability



### Act with integrity

Provide supports and services with integrity, honesty and transparency



### Take action on quality and safety

Promptly take steps to raise and act on concerns about matters that might have an impact on the quality and safety of supports provided to people with disability



### Prevent violence, neglect, abuse and exploitation

Take all reasonable steps to prevent and respond to all forms of violence, exploitation, neglect and abuse of people with disability



### Prevent sexual misconduct

Take all reasonable steps to prevent and respond to sexual misconduct.

FOR FURTHER DETAILS CONTACT (08) 9328 6202